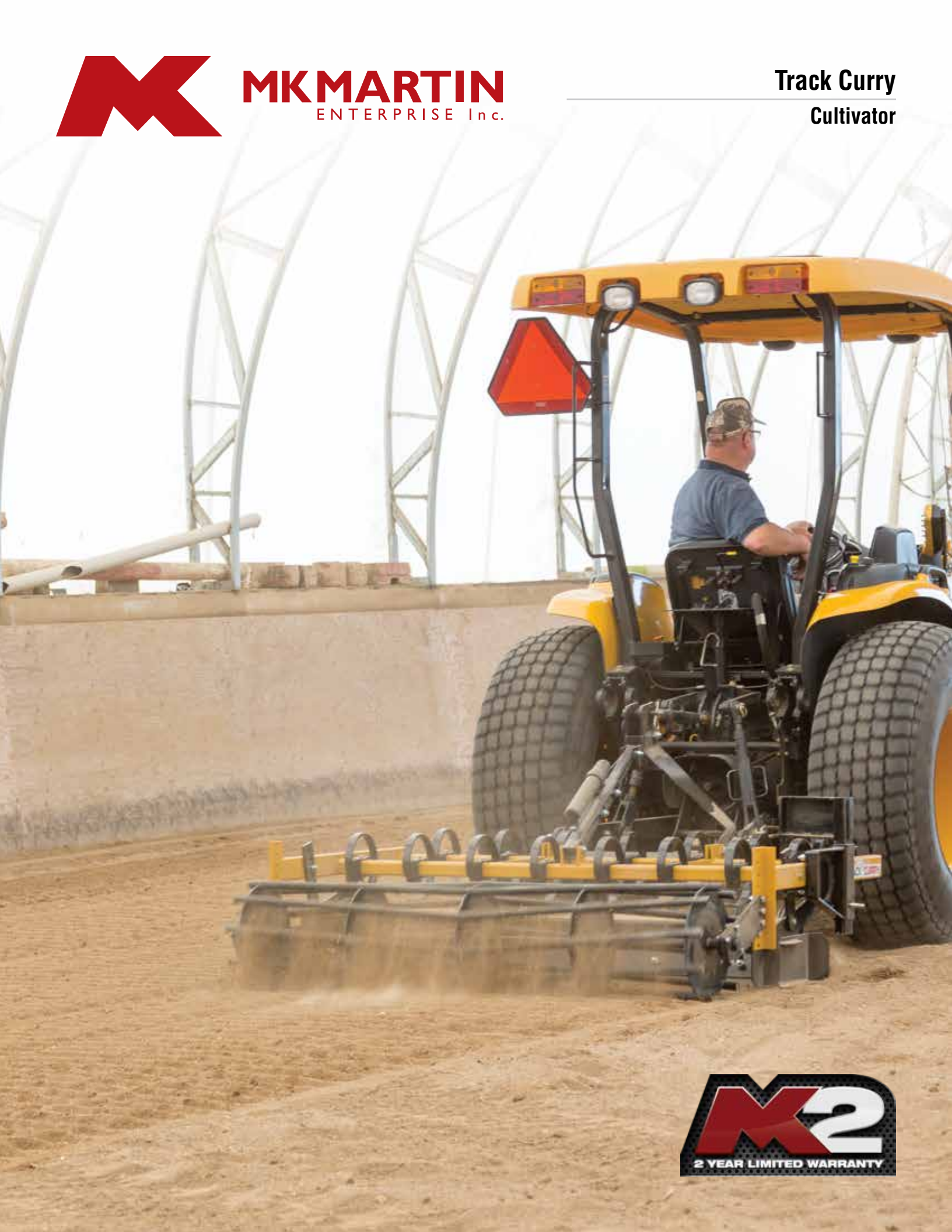




MK MARTIN
ENTERPRISE Inc.

**Track Curry
Cultivator**






This easy to use tool will allow you to condition indoor or outdoor track surfaces that have been packed or compressed by heavy traffic or natural elements such as heavy rains, to restore your riding surfaces in a single pass.

The **Track Curry** uses a three step process that begins with two rows of heavy duty S-tines to fracture compacted track beds by cultivating the ground. Followed by an adjustable leveling bar to redistribute and smooth out the freshly cultivated materials. An adjustable 12" rolling drum finishes the job by packing the surface to the ideal density and applying a subtle texture.

The MK Martin **Track Curry** will condition your arena or track to the footing most suited to the health and safety of your horses.

Model	TC-5	TC-6	TC-7	TC-8
Working Width	5'	6'	7'	8'
Number of Tines	13	15	17	19
Tines Size	1-1/4" x 1/2 x 22"			
Tine Clearance	16"	16"	16"	16"
3PH Mount	CAT. 1	CAT. 1	CAT. 1	CAT. 1
HP Rating	18 - 32	22 - 39	26 - 47	30 - 53
Weight (LBS.)	560	630	710	775
Leveling Bar	1/2" x 6" (double beveled)			
Sacrifier Bar (Optional) Number of rippers	4	5	6	7
Sprinkler System (Optional)	25 Gallon tank with 3 spray nozzles			



Heavy Duty S Tines

The two rows of S-tines works to loosen the material in your riding arena bringing the lower layer material to the top as they pull through ground. The S-tines are equipped with replaceable tips for easy maintenance and optimum performance.



Leveling Bar

The double beveled leveling bar cuts the peaks and fills the valleys across the arena surface without packing it. The adjustable height allows operators to make fine adjustment to the material thickness increasing or decreasing cushioning.



Spill Plates

The spill plates ensure that the material kicked up from the S-tines is directed to the leveling bar and available for redistribution.



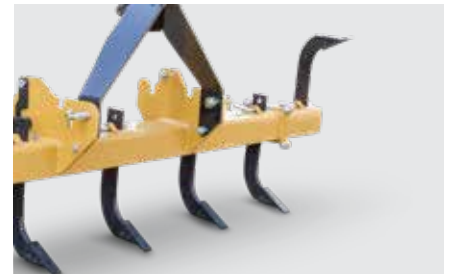
12" Rolling Drum

Designed to provide your horses with sure footed confidence, the 12" Rolling Drum breaks the surface of the material leaving behind a consistent pattern without causing further compaction.



Wing (Optional)

The optional Track Curry wing reaches out to the arena walls to reclaim any built up material leveling the outer edges of the arena a clean and professional look.



Scarifier Bar (Optional)

The optional scarifier bar mounts directly to the tractors 3PH. It's inline design enables direct mounting of the Track Curry to the scarifier to enable proper operation. Each ripper is independently adjustable for optimal results.



Sprinkler Kit (Optional)

Equipped with a 25 gallon tank, the optional sprinkler kit reduces the amount of dust being thrown into the air when working with dry material.



MK Martin **Cultivators** are the ideal tool to be used in small fields and gardens. Equipped with two rows of S-tines this cultivator provides thorough penetration aerating the soil and preparing seedbeds. Each tine features easy single bolt adjustment allowing you to adjust your soil distribution as required. Each S-tine also features replaceable bolt-on tips allowing for easy individual replacement as needed.

Model	CU-5	CU-6	CU-7
Working Width	60"	72"	84"
Overall Width	60-1/2"	72-1/2"	84-1/2"
Weight (LBS.)	193	223	253
Tines (Heat Treated)	9 tines	11 tines	13 tines
3PH Mount	CAT. 1	CAT. 1	CAT. 1